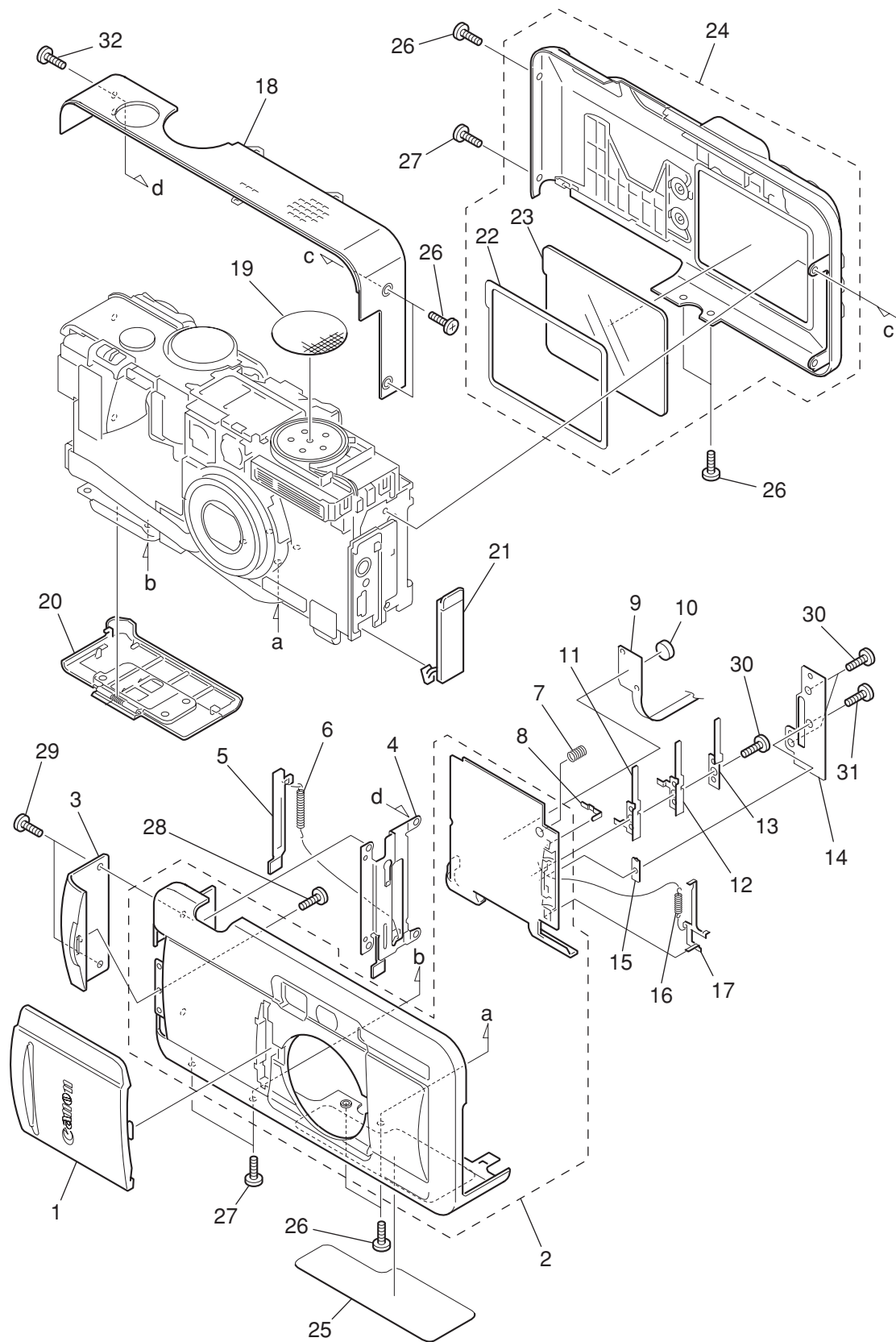


CHAPTER 4. PARTS CATALOG

CONTENTS

PowerShot S40/PowerShot S30	
Casing Parts -----	Pg1
Internal Parts-1 -----	Pg2
Internal Parts-2 -----	Pg3
Accessories-1 -----	Pg4
Accessories-2 -----	Pg5
Accessories-3 -----	Pg6
Service Tools -----	Pg7

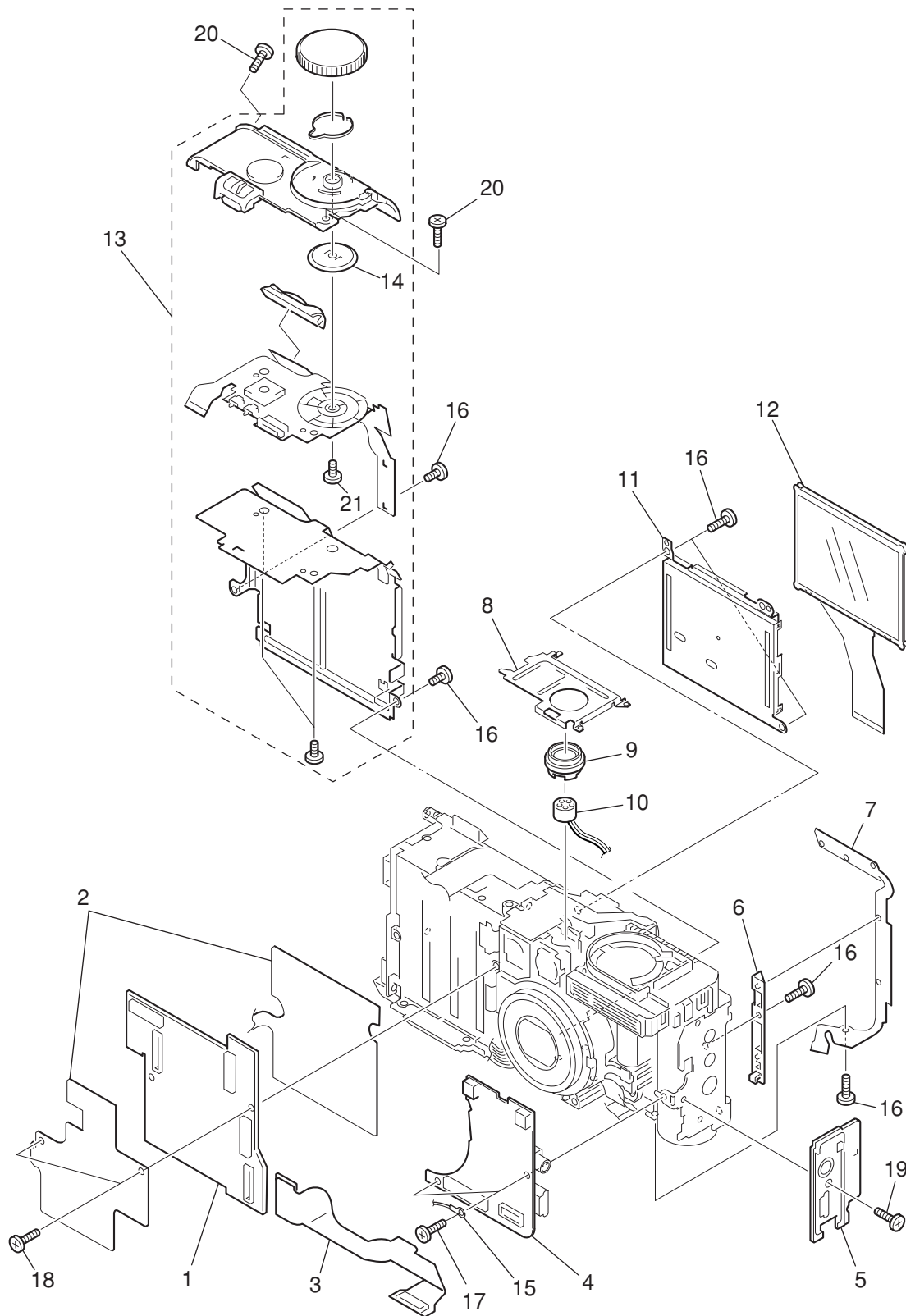
Casing Parts



PARTS LIST

SYMBOL	PARTS NO.	CLASS	QTY	DESCRIPTION	REMARKS
1	CM1-1236-000	B	1	BARRIER UNIT	S40
	CM1-1297-000	B	1	BARRIER UNIT	S30
2	CM1-1237-000	B	1	FRONT COVER UNIT	S40
	CM1-1298-000	B	1	FRONT COVER UNIT	S30
3	CD1-3936-000	B	1	BASE, STRAP	S40
	CD1-4044-000	B	1	BASE, STRAP	S30
4	CD1-3919-000	C	1	PLATE, LEFT	S40/S30
5	CD1-3917-000	B	1	BARRIER, DC	S40
	CD1-4069-000	B	1	BARRIER, DC	S30
6	CS8-5250-000	C	1	SPRING, DC BARRIER	S40/S30
7	CS8-5252-000	C	1	SPRING, FRONT GRAND	S40/S30
8	CD1-3920-000	C	1	PIN, BAR DETTECT	S40/S30
9	CM1-1211-000	C	1	BARRIER FPC UNIT	S40/S30
10	WK1-5132-000	C	1	BATTERY, LITHIUM (2ND)	S40/S30
11	CD1-3921-000	C	1	PLATE, BAR DETTECT 1	S40/S30
12	CD1-3922-000	C	1	PLATE, BAR DETTECT 2	S40/S30
13	CD1-3923-000	C	1	SPACER, BAR E	S40/S30
14	CD1-3912-000	C	1	PLATE, BAR PLANE	S40/S30
15	CD1-3911-000	C	1	SPACER, BAR	S40/S30
16	CS8-5251-000	C	1	SPRING, BAR LOCK LEV	S40/S30
17	CD1-3913-000	C	1	PLATE, BAR LOCK	S40/S30
18	CM1-1229-000	B	1	TOP COVER UNIT	S40
	CM1-1293-000	B	1	TOP COVER UNIT	S30
19	CD1-3964-000	C	1	SHEET, SPEAKER	S40/S30
20	CM1-1228-000	B	1	BOTTOM LID UNIT	S40
	CM1-1292-000	B	1	BOTTOM LID UNIT	S30
21	CD1-3892-000	B	1	COVER, JACK	S40
	CD1-4064-000	B	1	COVER, JACK	S30
22	CD1-3938-000	C	1	SPACER, LCD	S40/S30
23	CD1-3906-000	B	1	WINDOW, LCD	S40/S30
24	CM1-1233-000	B	1	REAR COVER UNIT	S40
	CM1-1295-000	B	1	REAR COVER UNIT	S30
25	CY1-6123-000	B	1	PLATE, BODY NUMBER (J)	S40 (FOR JAPAN)
	CY1-6124-000	B	1	PLATE, BODY NUMBER (N)	S40 (FOR USA/CANADA)
	CY1-6125-000	B	1	PLATE, BODY NUMBER (E)	S40 (FOR EUROPE)
	CY1-6126-000	B	1	PLATE, BODY NUMBER (J)	S30 (FOR JAPAN)
	CY1-6127-000	B	1	PLATE, BODY NUMBER (N)	S30 (FOR USA/CANADA)
	CY1-6128-000	B	1	PLATE, BODY NUMBER (E)	S30 (FOR EUROPE)
26	CD1-3951-000	F	7	SCREW	S40
	CD1-4045-000	F	7	SCREW	S30
27	CD1-3952-000	F	3	SCREW	S40
	CD1-4046-000	F	3	SCREW	S30
28	XA1-7170-307	F	3	SCREW	S40/S30
29	CD1-4045-000	F	2	SCREW	S40/S30
30	XA4-9140-307	F	3	SCREW	S40/S30
31	XA1-7140-307	F	1	SCREW	S40/S30
32	XA4-9170-359	F	1	SCREW	S40/S30

Internal Parts-1



PARTS LIST

SYMBOL	PARTS NO.	CLASS	QTY	DESCRIPTION	REMARKS
1	CM1-1206-000	C	1	MAIN PCB ASS'Y	S40
	CM1-1287-000	C	1	MAIN PCB ASS'Y	S30
2	CD1-3942-000	C	1	SHEET, MAIN	S40/S30
3	CM1-1209-000	C	1	MJ MODULE UNIT	S40/S30
4	CM1-1207-000	C	1	JAL PCB ASS'Y	S40/S30
5	CD1-3891-000	C	1	BASE, JACK	S40
	CD1-4063-000	C	1	BASE, JACK	S30
6	CD1-3903-000	C	1	BASE, RSW	S40/S30
7	CM1-1234-000	C	1	SW MODULE UNIT	S40/S30
8	CD1-3904-000	C	1	FRAME, TOP	S40/S30
9	CD1-3909-000	C	1	HOLDER, MICROPHONE	S40/S30
10	CM1-1215-000	C	1	MICROPHONE UNIT	S40/S30
11	CM1-1230-000	C	1	BACK LIGHT UNIT	S40/S30
12	WG2-5219-000	C	1	LCD PANEL	S40/S30
	WG2-5219-001	C	1	LCD PANEL (SELECTION)	S40/S30
13	CM1-1225-000	B	1	OPERATION BASE UNIT	S40
	CM1-1289-000	B	1	OPERATION BASE UNIT	S30
14	CL1-1060-000	C	1	BRUSH UNIT	S40/S30
15	CK2-1235-000	C	1	LEAD, DJ	S40/S30
16	XA1-7170-207	F	6	SCREW	S40/S30
17	XA1-7170-307	F	2	SCREW	S40/S30
18	FC2-8736-000	F	2	SCREW	S40/S30
19	CD1-4045-000	F	1	SCREW	S40/S30
20	XA4-9170-359	F	2	SCREW	S40/S30
21	XA4-9170-357	F	1	SCREW	S40/S30

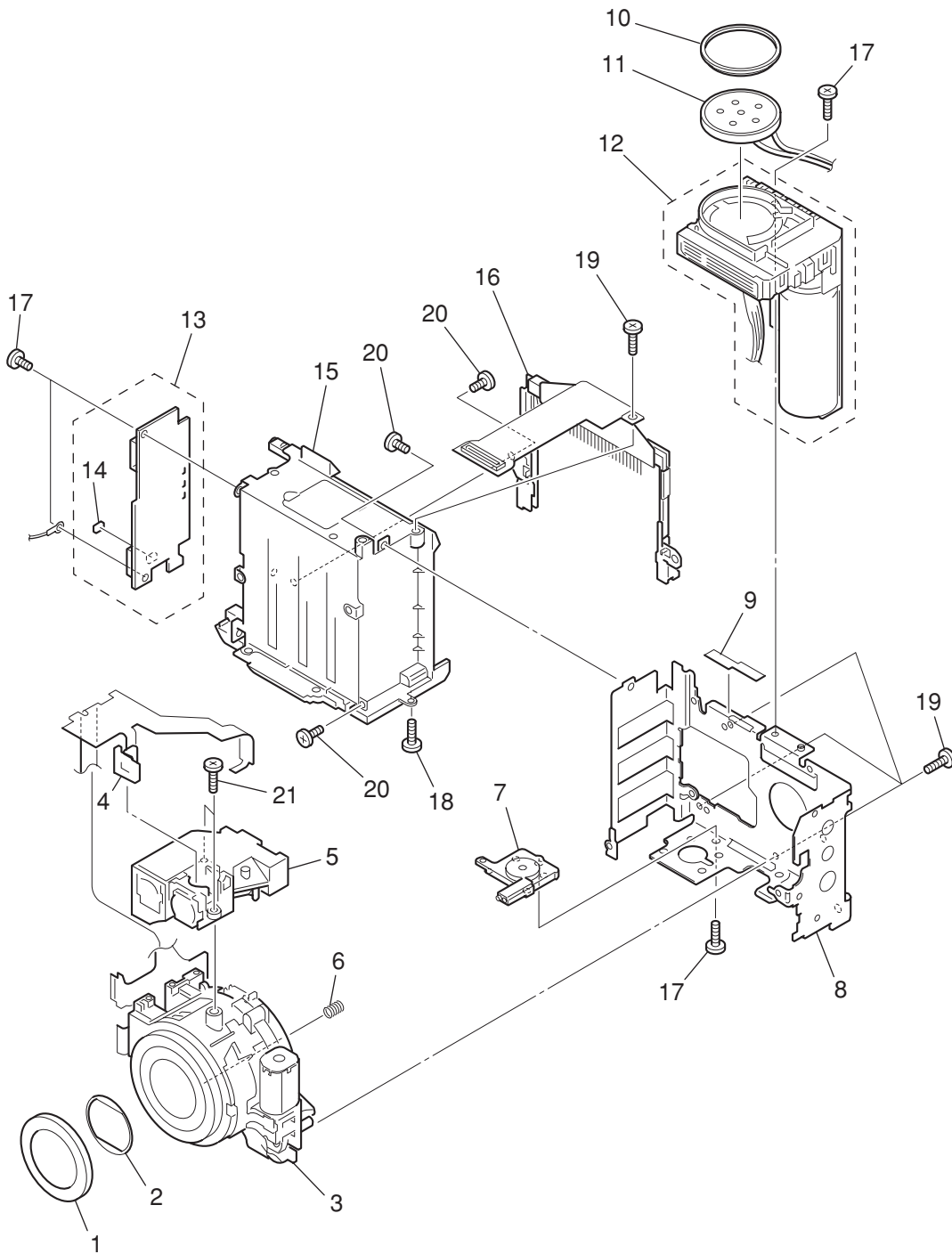
CLASS凡例

A: 使用頻度 高
 B: 使用頻度 中
 C: 使用頻度 低
 D: 安全規格部品
 E: 消耗部品
 F: 標準ネジ、ワッシャー
 S: 供給制限品

Category of CLASS

A: Frequency of use: High
 B: Frequency of use: Middle
 C: Frequency of use: Low
 D: Safety-related critical parts
 E: Consumable parts
 F: Standard screws and washers
 S: Supply of the parts is limited

Internal Parts-2

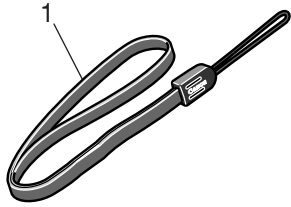


PARTS LIST

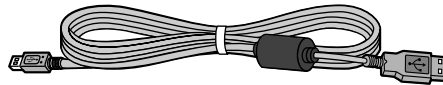
SYMBOL	PARTS NO.	CLASS	QTY	DESCRIPTION	REMARKS
1	CD1-3846-000	B	1	CAP, BARREL	S40/S30
2	CD1-3845-000	B	1	CAP, FRONT	S40/S30
3	CM1-1218-000	B	1	OPTICAL UNIT	S40
	CM1-1296-000	B	1	OPTICAL UNIT	S30
4	CD1-3869-000	C	1	HOLDER, LED	S40/S30
5	CM1-1223-000	B	1	FINDER UNIT	S40/S30
6	CS8-5209-000	C	1	SPRING, CCD	S40/S30
7	CD1-3894-000	C	1	BASE, TRIPOD	S40/S30
8	CD1-3888-000	C	1	FRAME, MAIN	S40/S30
9	CD1-3965-000	C	1	SHEET, FRAME	S40/S30
10	CD1-3908-000	C	1	BUSH, SPEAKER	S40/S30
11	CM1-1214-000	C	1	SPEAKER UNIT	S40/S30
12	CM1-1222-000	C	1	FLASH UNIT	S40/S30
13	CM1-1213-000	C	1	DC/DC PCB ASS'Y	S40/S30
14	CY4-6071-000	C	1	FUSE, DAITO KMC30	S40/S30
15	CM1-1219-000	C	1	BATTERY BOX UNIT	S40/S30
16	CM1-1210-000	C	1	CF UNIT	S40/S30
17	XA1-7170-307	F	4	SCREW	S40/S30
18	XA4-9170-307	F	1	SCREW	S40/S30
19	XA4-9170-359	F	4	SCREW	S40/S30
20	XA1-7170-207	F	3	SCREW	S40/S30
21	XA4-9140-407	F	2	SCREW	S40/S30

Accessories-1

Wrist Strap WS-300

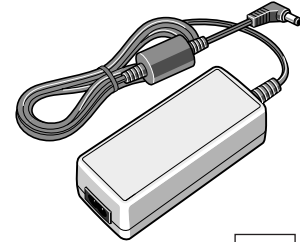


**USB Interface Cable
IFC-300PCU**



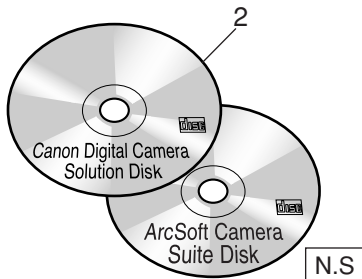
N.S

**Compact Power Adapter
CA-PS700**



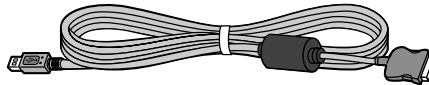
N.S

**Canon Digital Camera
Solution Disk,
ArcSoft Camera Suite Disk**



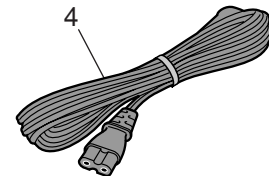
N.S

**Direct Interface Cable
DIF-100**

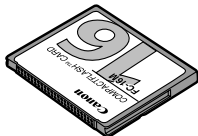


N.S

AC Cable

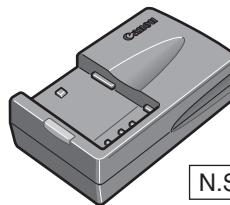


CF Card FC-16M



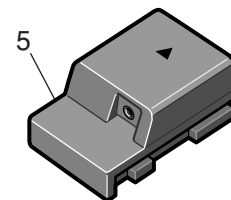
N.S

**Battery Charger
CB-2LT / CB-2LTE**

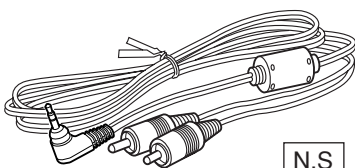


N.S

**DC Coupler
DR-700**

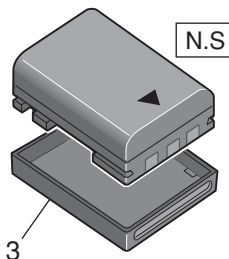


AV Cable AVC-DC100



N.S

Battery Pack NB-2L



N.S

Soft Case SC-PS800



N.S

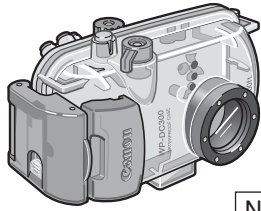
N.S : N.S Stand for No Stock (Product available)

PARTS LIST

SYMBOL	PARTS NO.	CLASS	QTY	DESCRIPTION	REMARKS
1	C84-1082-000	B	1	WRIST STRAP WS-300	
2	C84-1079-000	S	1	CD-ROM, SOLUTION VER.7.0 (J/E)	Expect EUROPE
3	C84-1085-000	B	1	COVER, TERMINAL NB-2L	
4	WT3-5062-000	C	1	AC CABLE (J)	FOR JAPAN
	WT3-5063-000	C	1	AC CABLE (N)	FOR USA/CANADA
	WT3-5064-000	C	1	AC CABLE (E)	FOR EUROPE/ASIA
	WT3-5115-000	C	1	AC CABLE (B)	FOR ASIA
	WT3-5066-000	C	1	AC CABLE (A)	FOR AUSTRARIA
5	C84-1078-000	B	1	DC COUPLER DR-700	

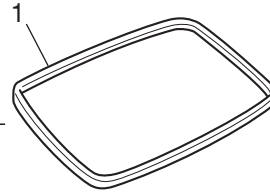
Accessories-2

Waterproof Case WP-DC300

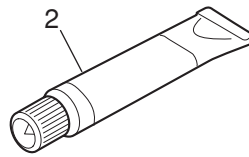


N.S

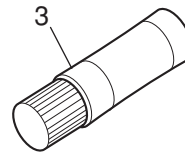
Waterproof Seal



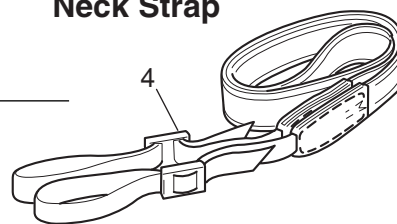
Silicone Grease



Anti-Condensation Solution



Neck Strap



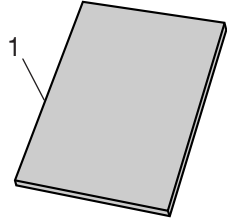
N.S : N.S Stand for No Stock (Product available)

PARTS LIST

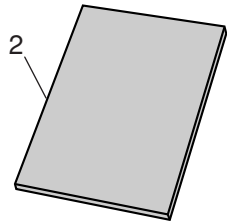
SYMBOL	PARTS NO.	CLASS	QTY	DESCRIPTION	REMARKS
1	CY1-6100-000	B	1	PACKING, RUBBER, WP-DC200	
2	DY9-3029-000	C	1	GREASE, PACKING	
3	DY9-3028-000	C	1	PROTECTOR, MOISTURE	
4	CY1-6099-000	B	1	NECK STRAP	

Accessories-3

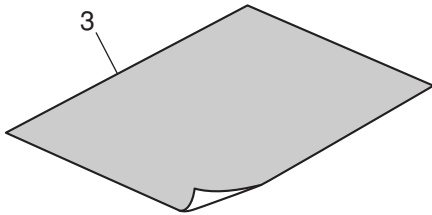
Camera User Guide



Software Starter Guide



System Map

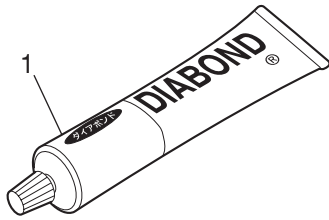


PARTS LIST

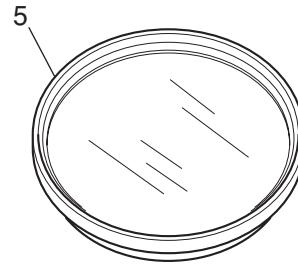
SYMBOL	PARTS NO.	CLASS	QTY	DESCRIPTION	REMARKS
1	CDI-J024-010	S	1	I.BOOK (J) PS S40/S30	FOR JAPAN
	CDI-E026-010	S	1	I.BOOK (E) PS S40/S30	FOR USA/CANADA/ASIA/ AUSTRARIA
	CDI-F023-010	S	1	I.BOOK (F) PS S40/S30	FOR CANADA
	CDI-S021-010	S	1	I.BOOK (S) PS S40/S30	FOR USA
2	CDI-J026-010	S	1	SOFTWARE GUIDE (J) FOR VER.7.0	FOR JAPAN
	CDI-E028-010	S	1	SOFTWARE GUIDE (E) FOR VER.7.0	FOR USA/CANADA/ASIA/ AUSTRARIA
	CDI-F025-010	S	1	SOFTWARE GUIDE (F) FOR VER.7.0	FOR CANADA
	CDI-S023-010	S	1	SOFTWARE GUIDE (S) FOR VER.7.0	FOR USA
3	CDI-J025-010	S	1	SYSTEM MAP (J) PS S40/S30	FOR JAPAN
	CDI-E027-010	S	1	SYSTEM MAP (E) PS S40/S30	FOR USA/CANADA/ASIA/ AUSTRARIA
	CDI-F024-010	S	1	SYSTEM MAP (F) PS S40/S30	FOR CANADA
	CDI-S022-010	S	1	SYSTEM MAP (S) PS S40/S30	FOR USA

Service Tools

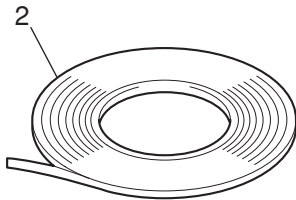
DIA BOND NO.1663G BLACK



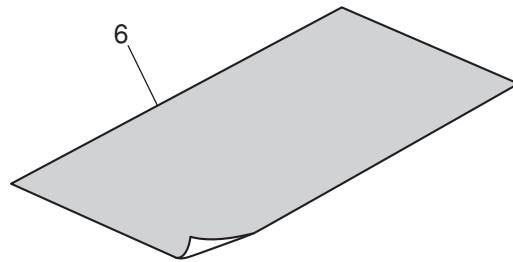
W-10 Filter



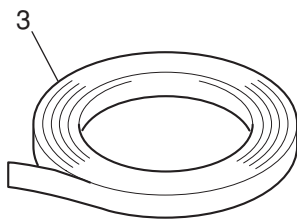
Adhesive Tape SONY T4000



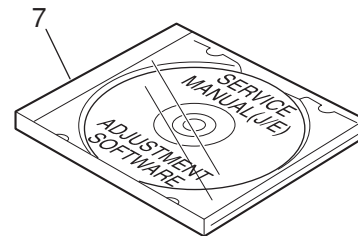
18% Gray Chart



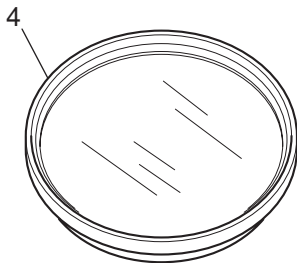
Adhesive Tape 3M NO.56



**Service Manual & Adjustment
Software CD-ROM**



C-12 Filter



PARTS LIST

SYMBOL	PARTS NO.	CLASS	QTY	DESCRIPTION	REMARKS
1	CY9-8129-000	Y	1	BOND, DIA BOND NO.1663G BLACK	
2	CY4-6012-000	Y	1	ADHESIVE TAPE, SONY T4000	6mm × 50m Roll
3	CY4-6018-000	Y	1	ADHESIVE TAPE, 3M NO.56	15mm × 66m Roll
4	DY9-2029-000	Y	1	FILTER, C-12	
5	CY9-1543-000	Y	1	FILTER, W-10	
6	CY4-6016-000	Y	1	CHART, 18% GRAY	
7	CY8-4374-031	Y	1	CD-ROM, SERVICE MANUAL (J/E)	